

OTEK Live



“Our services provide efficient and effective communication strategies to help clients”



OTEK provides specialised geospatial services that provide storage of and access to environmental data in formats based on locational or map type display interfaces. Solutions are tailored to your specific requirements, and may be based on a web accessible OTEK Live interface, or one of the market leading GIS packages (MapInfo Professional® by Pitney Bowes or ArcGIS® by Esri). These solutions are in demand as we know that environmental data is expensive to gather, and can be difficult to understand. It can also be challenging to store and retrieve.

OTEK Live

OTEK Live is a proprietary web interface. Based on Google Maps it is designed to give secure client access to key project data. OTEK Live is designed for clients that have a geographically diverse portfolio of sites. The interface allows for rapid locating of a site. Once a property has been located, key site information and documentation is accessible for viewing or downloading.

OTEK Live is a tool that gives the client access to live data regarding the status of environmental works being undertaken by OTEK at their sites. Where there is active work on a site updates can be made daily.

An added benefit of OTEK Live is its document storage facility.

This allows key client and consultant reports and other documents to be stored in a web accessible form. Gone are the days when important files are stored on individual computers in email inboxes with access only available when the original recipient is available.

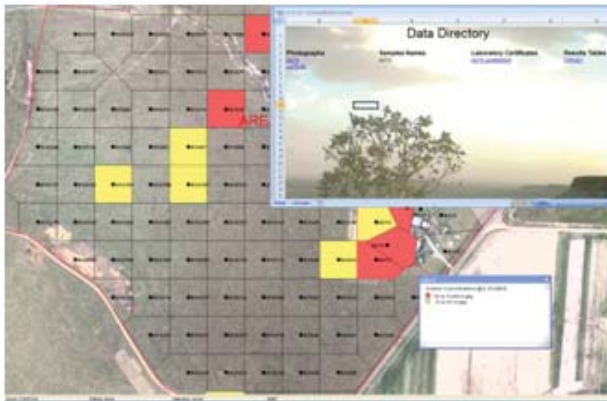
OTEK Live is a widely used and emerging industry standard for contaminated site and environmental management databases across property portfolios that consist of between 10 and 10,000 sites. OTEK Live can be customized to your specific requirements if greater functionality is sought.

To try OTEK Live, visit the demonstration database at www.otek.live.com.au username `enviro@otek.com.au`, password `quest`.

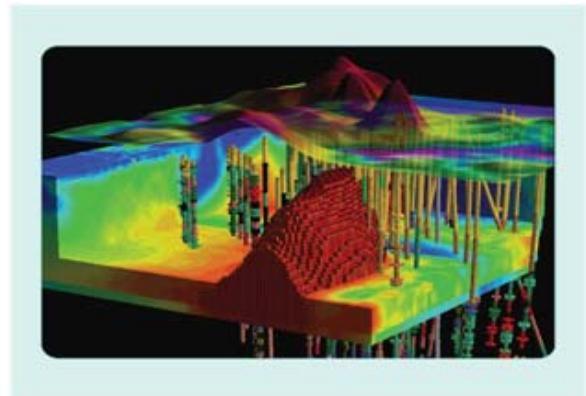


Some individual sites undergo extensive environmental investigation or remediation programs – typically at costs in excess of \$500,000. In these cases a large amount of raw environmental data is usually generated. This can be in a range of forms including:

- Historical aerial photographs
- Sample locations
- Bore logs and soil profiles
- Analytical results
- Duplicate and triplicate analytical results
- Photographs
- Groundwater elevations and flow directions
- Hotspot and groundwater plume extents and concentrations



OTEK Geospatial Services works with MapInfo Professional® or ArcGIS® to develop application specific databases that meet the needs of each project. Electronically managing the raw data into a unified database eliminates transcription errors and enables any combination of the data to be viewed in two or three dimensions. This saves costs and greatly improves the assessment and interpretation of the data, resulting in faster and lower cost project completions.



For more information about OTEK's capabilities and services, please contact your local OTEK office.

National

OTEK, Level 1, 222 St Kilda Road, St Kilda, VIC 3182 T: +61 3 9525 5155 F: +61 3 9593 8555

Melbourne

OTEK, Level 1, 222 St Kilda Road, St Kilda, VIC 3182 T: +61 3 9525 5155 F: +61 3 9593 8555

Sydney

OTEK, Suite 4.01, Level 4, 146 Arthur Street, North Sydney, NSW 2060 T: +61 2 9417 4499 F: +61 2 9417 2314

Brisbane

OTEK, Level 1, 9/44 Station Road, Yeerongpilly QLD 4105 T: +61 7 3426 5200 F: +61 7 3426 5299

Perth

OTEK, Unit 2 Building A, 661 Newcastle Street, Leederville WA 6007 T: +61 8 9227 9000 F: +61 8 9227 9009

Adelaide

OTEK, Level 5, City Central Tower 2, 121 King William Street, Adelaide SA 5000

T: +61 8 8423 4480 F: +61 8 8423 4500

Beijing

OTEK 北京市朝阳区建国路77号华贸中心写字楼3座24层: 100025

OTEK, Level 24, Tower 3 China Central Place, 77 Jianguo Road, Chaoyang District Beijing 100025 China

T: +86 10 8587 2425 F: +86 10 8587 2426

Shanghai

OTEK 上海浦东花园石桥路33号花旗集团大厦23楼: 200120

OTEK, Level 23, Citigroup Tower, 33 Huayuanshiqiao Rd, Pudong District Shanghai 200120 China

T: +86 21 6101 0049 F: +86 21 6101 0220